

XP Series Pre-Wired Factory Sealed Circuit Breaker Panelboards

Explosionproof, Dust-Ignitionproof System

NEC/CEC:

Class I, Division 2, Groups B, C, D
Class I, Zone 1 and 2, Groups IIB + H₂
Class II, Division 1 and 2, Groups E, F, G
Class III

CEC:

EMR Canada approved
NEMA/EEMAC 3, 4, 4X, 7BCD, 9EFG, 12
IP66

Applications

- Protection and control of electrical apparatus and circuits in hazardous environments, either indoor or outdoor. Designed for Class I, Division 2 areas where flammable gases or vapors are present under abnormal circumstances.
- For use with lighting or heat tracing circuits.

Features

- Wiring from branch circuit breakers in the panelboard to the terminal blocks in the terminal enclosure are factory sealed, eliminating the need of labour intensive field wiring and use of sealing fittings.
- Exclusive rotary-slide circuit breaker operators have positive action and will align with breakers in ON or OFF position when cover is being closed.
- Design allows breaker to be locked in ON or OFF position. Will not prevent breaker from tripping.
- Conduit entries in top or bottom positioned terminal enclosure can be either field installed or factory installed to customer requirements.
- Four sizes of panelboards available.
- Copper phase bus bars.
- Furnished with bolt on breakers.
- Removable hinged cover gives unobstructed access to interior. Left hand hinges are standard. Right hand hinges are available.
- Detailed marking is plainly visible for easy circuit identification.
- Installation is easy with keyhole mounting lugs to simplify mounting.

Standard Materials

- Panelboard enclosure and cover: copperfree (4/10 of 1% max.) aluminum
- Operator shafts, cover bolts and fasteners: stainless steel
- Operator knobs: aluminum alloy
- Terminal enclosure: 304 stainless steel
- Standard branch circuit breakers type BAB, 1-, 2- or 3-pole. 10,000 RMS symmetrical (240 Volt Max.)
- Standard branch circuit breakers type GHB, 1-, 2- or 3-pole. 10,000 RMS symmetrical interrupting capacity (80 Volt).
- Standard branch circuit breakers type GBH, 1-, 2- or 3-pole. 10,000 RMS symmetrical interrupting capacity (347/600 Volt).
- F-Frame available in 480 and 600 Volts. Interrupting capacity up to 65,000 RMS symmetrical available. Consult your local representative

Standard Finish

- Epoxy powder coat electrostatically applied

Options

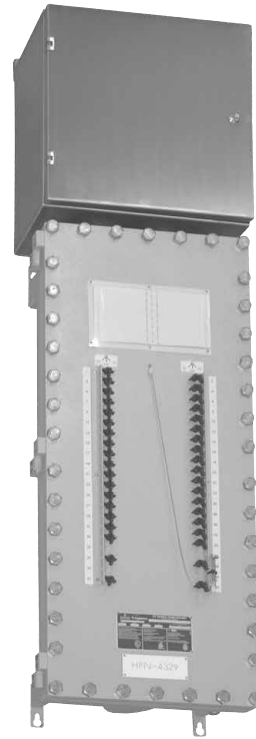
Must be listed in alphanumeric sequence at the end of the catalog number.

- Breather and drain sets, add suffix **-BD**.
- Ferrous alloy, add suffix **-F**.
- 5 ma GFI people protector (40 Amp Max., 1- or 2-Pole only), add suffix **-GF5**.
- 30 mA EPD Equipment Protector (30 Amp Max., 1- or 2-Pole only), add suffix **-GF10**.
- 30 mA with alarm circuit, add suffix **-GFA10**.
- Grounded neutral lug, add suffix **-GNL**.
- Heater c/w thermostat, add suffix **-HTR**.
- Bottom feed, add suffix **-INV**.
- Breaker ON-OFF indicator Light (LED), add suffix **-IL**.

- Operator cover, add suffix **-OC**.
- Cover hinge on right hand side, add suffix **-RH**.
- CSA type 4X enclosure, add suffix **-4X**.
- Main Breaker Options
 - Auxiliary switch (1A or 1B) add suffix **-AS1**.
 - Auxiliary switch (2A or 2B) add suffix **-AS2**.
 - Shunt trip (specify voltage) add suffix **-ST**.
 - Under voltage release (specify voltage) add suffix **-UV**.
 - For +50 °C (+122 °F) breaker rating, add suffix **-V**.
- Lighting contactor 30Amps, 3Poles - 12poles. Contact your local representative.
- High AIC rating F-Frame breakers available. Contact your local representative.
- For dc rating consult your local representative.
- 316L stainless steel terminal enclosure available. Contact your local representative.
- Division I version available. Comes with cast aluminum terminal enclosure. Contact your local representative.

NEC/CEC Certifications and Compliances

- UL Standard: UL 67, UL 1203
- cUL Certified: 039199
- CSA Standard: C22. 2 No. 25, C22.2 No. 29, C22.2 No. 30
- CSA Certified: 039199



XP Series Pre-Wired Factory Sealed Circuit Breaker Panelboards

Explosionproof, Dust-Ignitionproof System

NEC/CEC:

Class I, Division 2, Groups B, C, D
 Class I, Zone 1 and 2, Groups IIB + H₂
 Class II, Division 1 and 2, Groups E, F, G
 Class III

CEC:

EMR Canada approved
 NEMA/EEMAC 3, 4, 4X, 7BCD, 9EFG, 12
 IP66

Catalog Numbering Guide

<p>XP</p> <p>Series: XP - Factory Sealed</p>	<p>B</p>	<p>1</p>	<p>100</p>	<p>2</p>	<p>PL</p> <p>Main Required: PL - Main lugs only PB - Main Breaker PR - Reverse Feed</p>	<p>25</p>	<p>10</p>	<p>15</p>	<p>1</p> <p>Poles ①: 1 - 1 2 - 2 3 - 3</p>	<p>GF5</p>	<p>▲</p> <p>Suffix for Other Options/Features: Must be listed in alphanumeric sequence (See Options)</p>																																																					
<p>Size:</p> <table border="1"> <thead> <tr> <th>Volts</th> <th>A</th> <th>B</th> <th>C</th> <th>E</th> </tr> </thead> <tbody> <tr> <td colspan="5">Main Lugs Only</td> </tr> <tr> <td>240</td> <td>12</td> <td>24</td> <td>42</td> <td>48</td> </tr> <tr> <td>277/480</td> <td></td> <td></td> <td></td> <td>42</td> </tr> <tr> <td>347/600</td> <td></td> <td></td> <td></td> <td>42</td> </tr> <tr> <td>480/600</td> <td></td> <td></td> <td></td> <td>42</td> </tr> <tr> <td colspan="5">With Main Breaker</td> </tr> <tr> <td>240</td> <td>6</td> <td>18</td> <td>36</td> <td>42</td> </tr> <tr> <td>277/480</td> <td></td> <td></td> <td></td> <td>42</td> </tr> <tr> <td>347/600</td> <td></td> <td></td> <td></td> <td>42</td> </tr> <tr> <td>480/600</td> <td></td> <td></td> <td></td> <td>36</td> </tr> </tbody> </table>		Volts	A	B	C	E	Main Lugs Only					240	12	24	42	48	277/480				42	347/600				42	480/600				42	With Main Breaker					240	6	18	36	42	277/480				42	347/600				42	480/600				36	<p>Main Amp Bus: 100 - 100 225 - 225</p>	<p>Main Breaker Ampere Rating: 020 - 20AT 025 - 25AT 030 - 30AT 040 - 40AT 050 - 50AT 060 - 60AT 070 - 70AT 080 - 80AT 090 - 90AT 100 - 100AT 110 - 110AT 125 - 125AT 150 - 150AT 175 - 175AT 200 - 200AT 225 - 225AT</p>	<p>Type of Breaker ①: Blank - BAB Standard Branch Breaker GF5 - 5 ma GFI people protector (40 Amp Max., 1- or 2-Pole only) GF10 - 30 mA EPD Equipment Protector (30 Amp Max., 1- or 2-Pole only) GFA10 - 30 mA With Alarm Circuit</p>	<p>Phases: 1 - 1-Phase 3 - 3-Phase</p>	<p>Voltage: 2 - 120/240, 120/208 4 - 277/480Y (GHB only) 6 - 347/600Y (GBH only) 7 - 480 (F-Frame only) 8 - 600 (F-Frame only)</p>	<p>Quantity of Branch Breakers ①: 1 thru 48</p>	<p>Ampere Rating ①: 10 - 10AT 15 - 15AT 20 - 20AT 25 - 25AT 30 - 30AT 35 - 35AT 40 - 40AT 45 - 45AT 50 - 50AT 60 - 60AT 70 - 70AT 80 - 80AT (not for 1-Pole) 90 - 90AT (not for 1-Pole) 100 - 100AT 110 - 110AT (2-, 3-Pole, 480, 600 Only) 125 - 125AT (2-, 3-Pole, 480, 600 Only) 150 - 150AT (2-, 3-Pole, 480, 600 Only) 175 - 175AT (2-, 3-Pole, 480, 600 Only) 200 - 200AT (2-, 3-Pole, 480, 600 Only)</p>	<p>Additional Branch Breakers: Repeat Step ①</p>
Volts	A	B	C	E																																																												
Main Lugs Only																																																																
240	12	24	42	48																																																												
277/480				42																																																												
347/600				42																																																												
480/600				42																																																												
With Main Breaker																																																																
240	6	18	36	42																																																												
277/480				42																																																												
347/600				42																																																												
480/600				36																																																												

XP Series Pre-Wired Factory Sealed Circuit Breaker Panelboards

Explosionproof, Dust-Ignitionproof System

NEC/CEC:

Class I, Division 2, Groups B, C, D
 Class I, Zone 1 and 2, Groups IIB + H₂
 Class II, Division 1 and 2, Groups E, F, G
 Class III

CEC:

EMR Canada approved
 NEMA/IEE MAC 3, 4, 4X, 7BCD, 9EFG, 12
 IP66

DISTRIBUTION EQUIPMENT: NEC/CEC HAZARDOUS LOCATION PANELBOARDS

Max. No. of Circuits ①	Panel Size	1-Phase 120/240 Vac		3-Phase 120/208 Vac	
		100 Amps	225 Amps	100 Amps	225 Amps
Main Lugs Only					
12	A	XPA11002PL	XPA12252PL	XPA31002PL	XPA32252PL
24	B	XPB11002PL	XPB12252PL	XPB31002PL	XPB32252PL
42	C	XPC11002PL	XPC12252PL	XPC31002PL	XPC32252PL
48	E	XPE11002PL	XPE12252PL	XPE31002PL	XPE32252PL
Main Breaker Panelboard					
6	A	XPA11002PB	XPA12252PB	XPA31002PB	XPA32252PB
18	B	XPB11002PB	XPB12252PB	XPB31002PB	XPB32252PB
36	C	XPC11002PB	XPC12252PB	XPC31002PB	XPC32252PB
42	E	XPE11002PB	XPE12252PB	XPE31002PB	XPE32252PB

Reverse Feed Main Breaker Panelboard

Max. No. of Circuits ①	Panel Size	100 Amps	
		1-Phase 120/240 Vac	3-Phase 120/208 Vac
12	A	XPA11002PR	XPA31002PR
24	B	XPB11002PR	XPB31002PR
42	C	XPC11002PR	XPC31002PR
48	E	XPE11002PR	XPE31002PR

Main Breaker ②

4-pole main breaker available, contact your local representative.

	Suffix	Amp Rating	Breaker Type	Amps I.R./240 Vac Max.
Standard Breaker	05	50		
	07	70	FDB	18,000
	10	100		
	17	175		
	20	200	FD	65,000
Reversed Breaker	22	225		
	05	50		
	07	70	BAB	10,000
	10	100		

① 18 and 30 circuit panelboards available. Contact your local representative.

② Other Main Breaker Ampere ratings available. Contact your local representative.

XP Series Pre-Wired Factory Sealed Circuit Breaker Panelboards

Explosionproof, Dust-Ignitionproof System

NEC/CEC:

Class I, Division 2, Groups B, C, D
 Class I, Zone 1 and 2, Groups IIB + H₂
 Class II, Division 1 and 2, Groups E, F, G
 Class III

CEC:

EMR Canada approved
 NEMA/IEEMAC 3, 4, 4X, 7BCD, 9EFG, 12
 IP66

Max. No. of Circuits ①	Panel Size	3-Phase 277/480 Vac, GHB Only		3-Phase 347/600 Vac, GBH Only	
		100 Amps	225 Amps	100 Amps	225 Amps
Main Lugs Only – 3 Phase, 4 Wire					
42	E	XPE31004PL	XPE32254PL	XPE31006PL	XPE32256PL
Main Breaker Panelboard – 3 Phase, 4 Wire					
42	E	XPE31004PB	XPE32254PB	XPE31006PB	XPE32256PB

Max. No. of Circuits ①	Panel Size	3-Phase 480 Vac, F-Frame Only		3-Phase 600 Vac, F-Frame Only	
		100 Amps	225 Amps	100 Amps	225 Amps
Main Lugs Only – 3 Phase, 3 Wire					
42	E	XPE31007PL	XPE32257PL	XPE31008PL	XPE32258PL
Main Breaker Panelboard – 3 Phase, 3 Wire					
36	E	XPE31007PB	XPE32257PB	XPE31008PB	XPE32258PB

Main Breaker ②

	Suffix	Amp Rating	Breaker Type
Standard Breaker	05	50	
	07	70	FDB
	10	100	
	15	150	
	17	175	
	20	200	FD
	22	225	

① 12, 24 and 30 circuit panelboards available. Contact your local representative.

② Other Main Breaker Ampere ratings available. Contact your local representative.

XP Series Pre-Wired Factory Sealed Circuit Breaker Panelboard

Explosionproof, Dust-Ignitionproof System

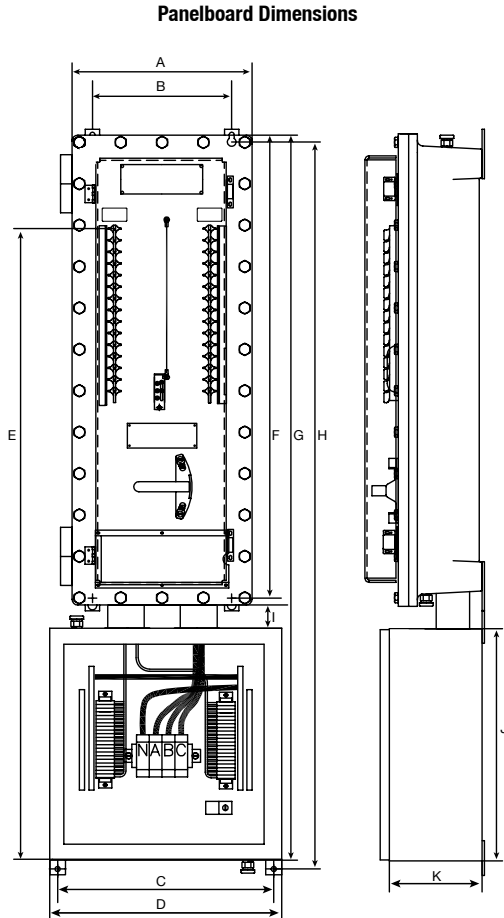
NEC/CEC:
 Class I, Division 2, Groups B, C, D
 Class I, Zone 1 and 2, Groups IIB + H₂
 Class II, Division 1 and 2, Groups E, F, G
 Class III

CEC:
 EMR Canada approved
 NEMA/EEMAC 3, 4, 4X, 7BCD, 9EFG, 12
 IP66

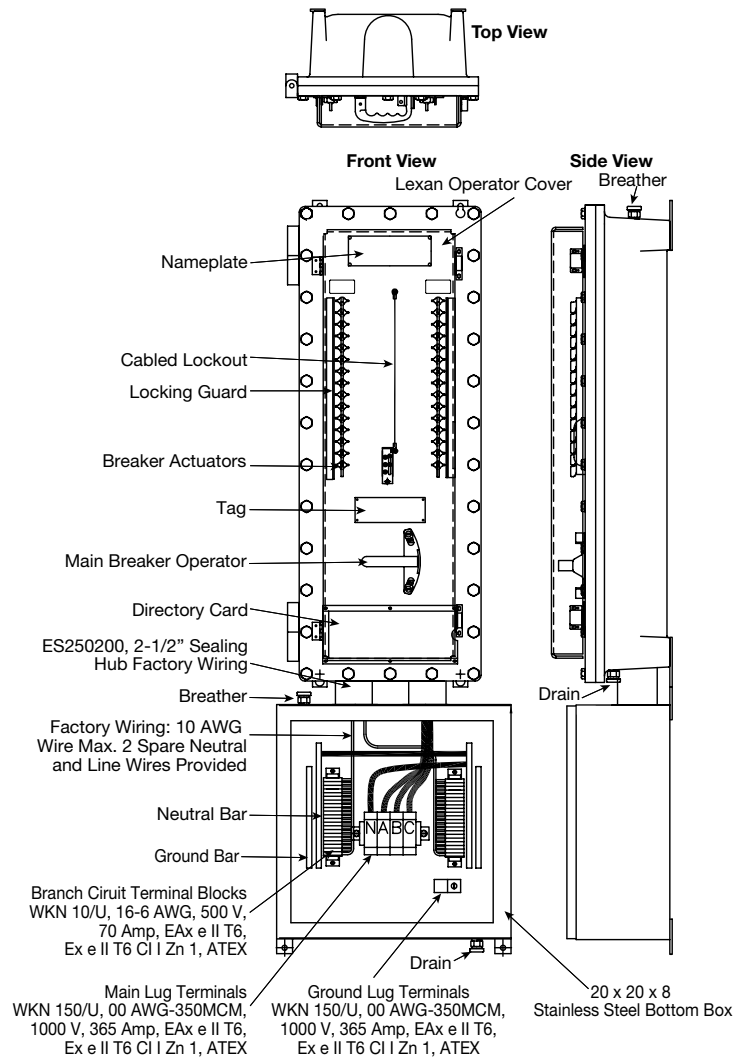
DISTRIBUTION EQUIPMENT: NEC/CEC HAZARDOUS LOCATION PANELBOARDS

Appleton®

Dimensions in Millimeters (Inches)



Illustrated Panelboard



Panel Size	Dimensions in Millimeters (Inches)										
	A	B	C	D	E	F	G	H	I	J	K
A	393.7 (15.50)	304.8 (12.00)	371.6 (14.63)	406.4 (16.00)	810.2 (31.90)	576.3 (22.69)	1003.3 (39.50)	1058.1 (41.66)	50.8 (2.00)	406.4 (16.00)	203.2 (8.00)
B	393.7 (15.50)	304.8 (12.00)	371.6 (14.63)	406.4 (16.00)	1013.4 (39.90)	785.8 (30.94)	1206.5 (47.50)	1261.3 (49.66)	50.8 (2.00)	406.4 (16.00)	203.2 (8.00)
C	393.7 (15.50)	304.8 (12.00)	473.2 (18.63)	508.0 (20.00)	1380.4 (54.35v)	1014.4 (39.94)	1663.7 (62.50)	1591.1 (62.65)	50.8 (2.00)	508.0 (20.00)	203.2 (8.00)
E	495.3 (19.50)	400.0 (15.75)	473.2 (18.63)	508.0 (20.00)	1483.6 (58.41)	1155.7 (45.50)	1715.0 (67.54)	1719.0 (67.68)	50.8 (2.00)	508.0 (20.00)	203.2 (8.00)